

# Assessing the Intersection of Drug Use, Sexual Risk, and HIV/STI Burden: A Surveillance Study in the Dominican Republic

Sánchez, Rosa <sup>1</sup>; Brioso, Melvin <sup>1</sup>; Paulino-Ramírez, Robert <sup>2</sup>; Molina, Maritza <sup>3</sup>; Polanco, Juan José <sup>3</sup>.

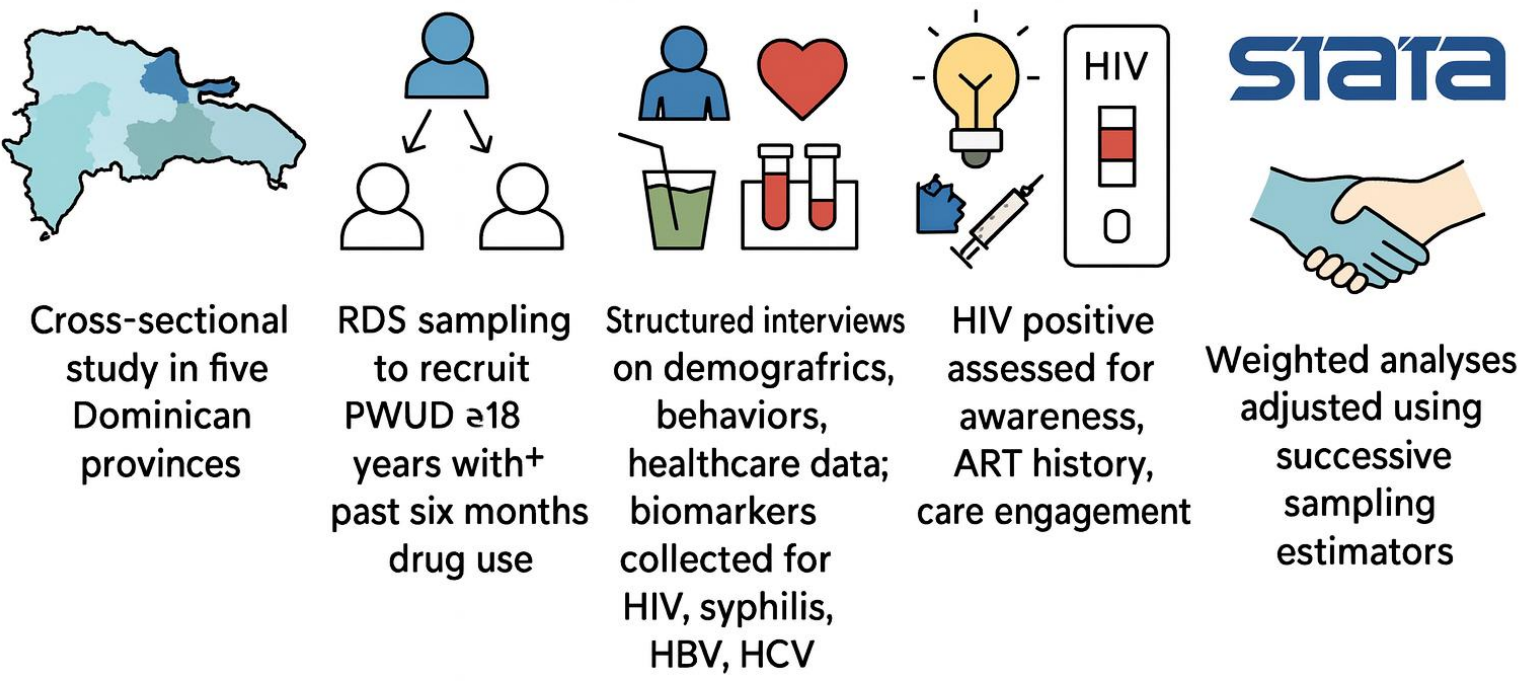
<sup>1</sup> National Council for HIV/AIDS (CONAVIHSIDA), Santo Domingo, Dominican Republic  
<sup>2</sup> Institute of Tropical Medicine & Global Health, Universidad Iberoamericana (UNIBE), Santo Domingo, Dominican Republic  
<sup>3</sup> Center for Demographic and Social Studies (CESDEM), Santo Domingo, Dominican Republic



## Background

- Drug use and HIV pose a public health challenge in the Dominican Republic (DR), where stigma and limited healthcare access increase risks for PWUD.
- This study assesses HIV seroprevalence, STIs, and healthcare engagement to inform targeted interventions, harm reduction, and treatment strategies for improved prevention and public health responses.

## Methods



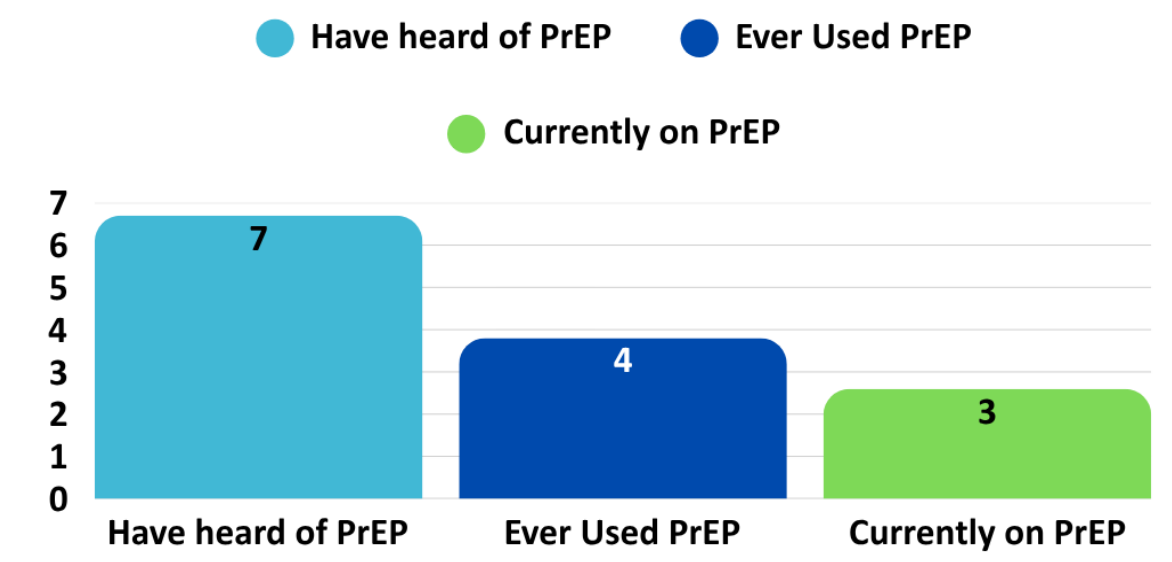
## Results



## PWH/PWUD

- 67% (95% CI: 65.0%–69.0%) engaged in transactional sex for money, goods, or services.
- 16.7% (95% CI: 15.1%–18.3%) had ever initiated ART
- 14.3% (95% CI: 12.8%–15.8%) reported current ART use
- 74% (95% CI: 72.1%–75.9%) of PWUD with prior ART experience had discontinued treatment

Seroprevalence  
HIV (4%)  
Syphilis (11.5%)  
HCV (1.2%)  
HBV (2.7%)



## Conclusions

- Findings highlight critical gaps in HIV prevention and care, emphasizing the need for integrated, evidence-based interventions. Expanding PrEP access through harm reduction services, strengthening ART adherence through peer-led models, and integrating harm reduction into national HIV strategies are essential.
- Addressing stigma and criminalization via policy reforms and scaling up HIV/STI testing and linkage-to-care models is crucial.
- These findings provide evidence to inform policy and programmatic interventions, supporting global HIV epidemic control efforts for key populations

